



Carte Postale

Correspondance

Adresse



Modèle

dépose

PARIS

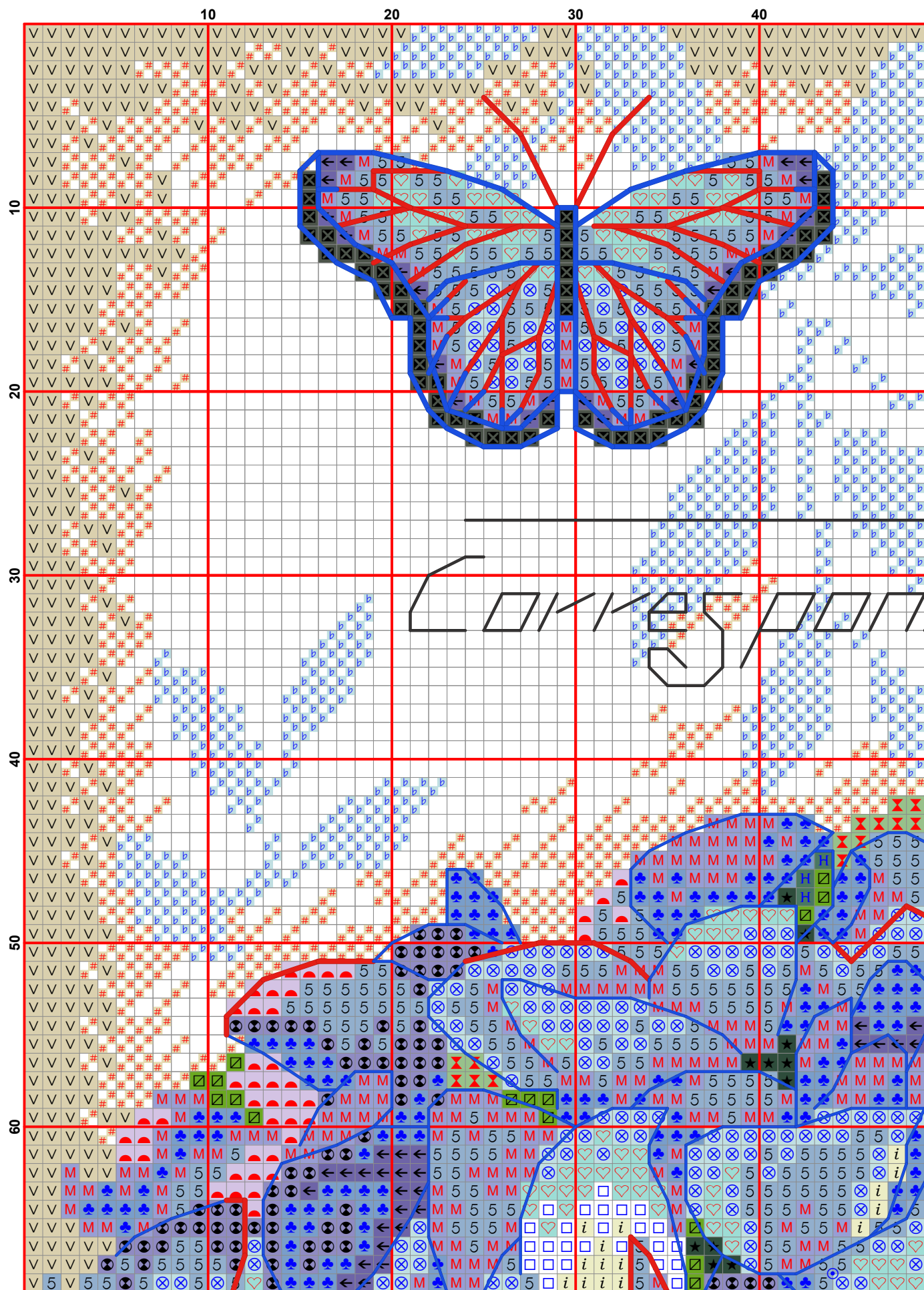
de

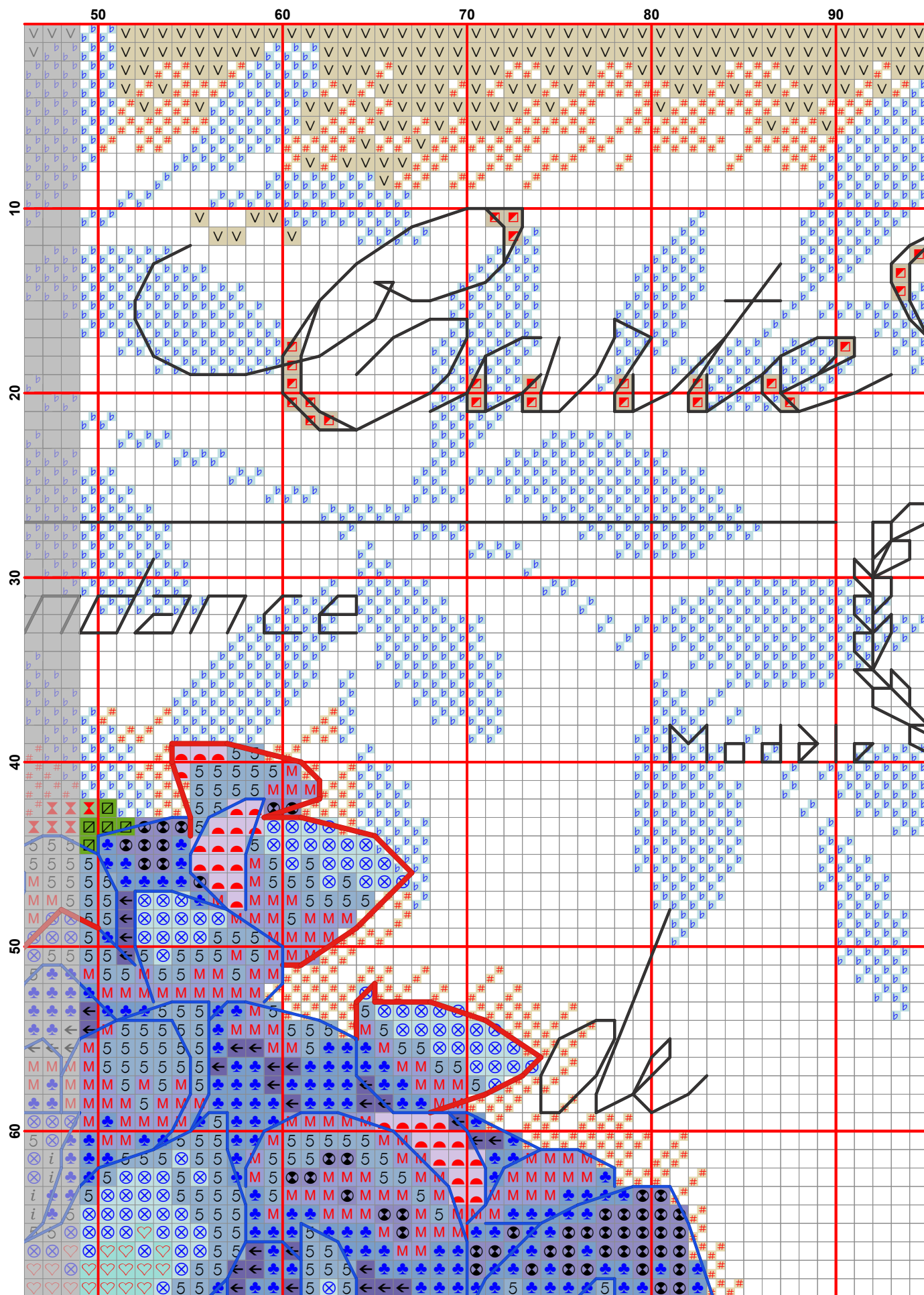
Melle Sofia Barnach
avenue Alphonse
se III de
Paris

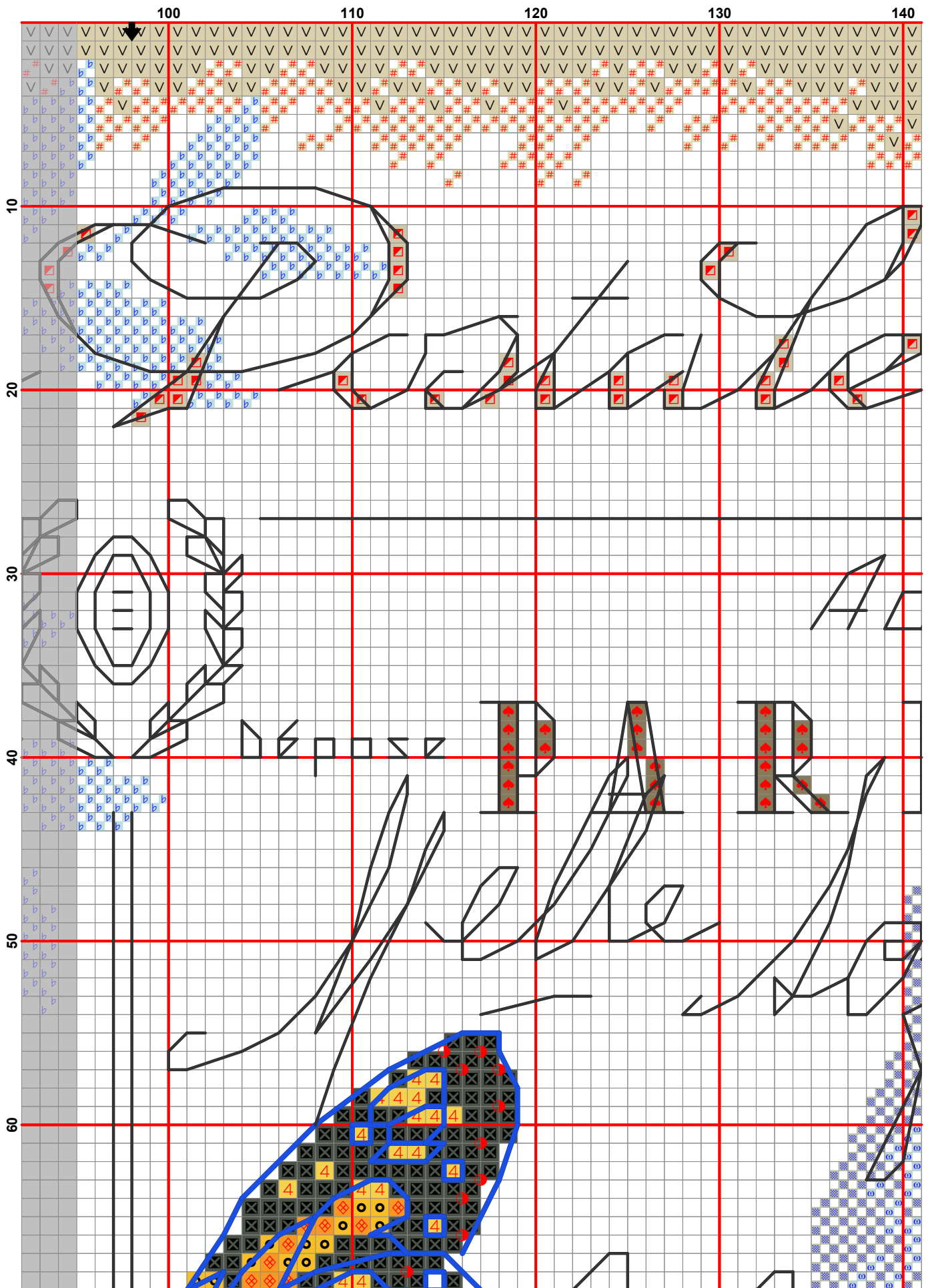


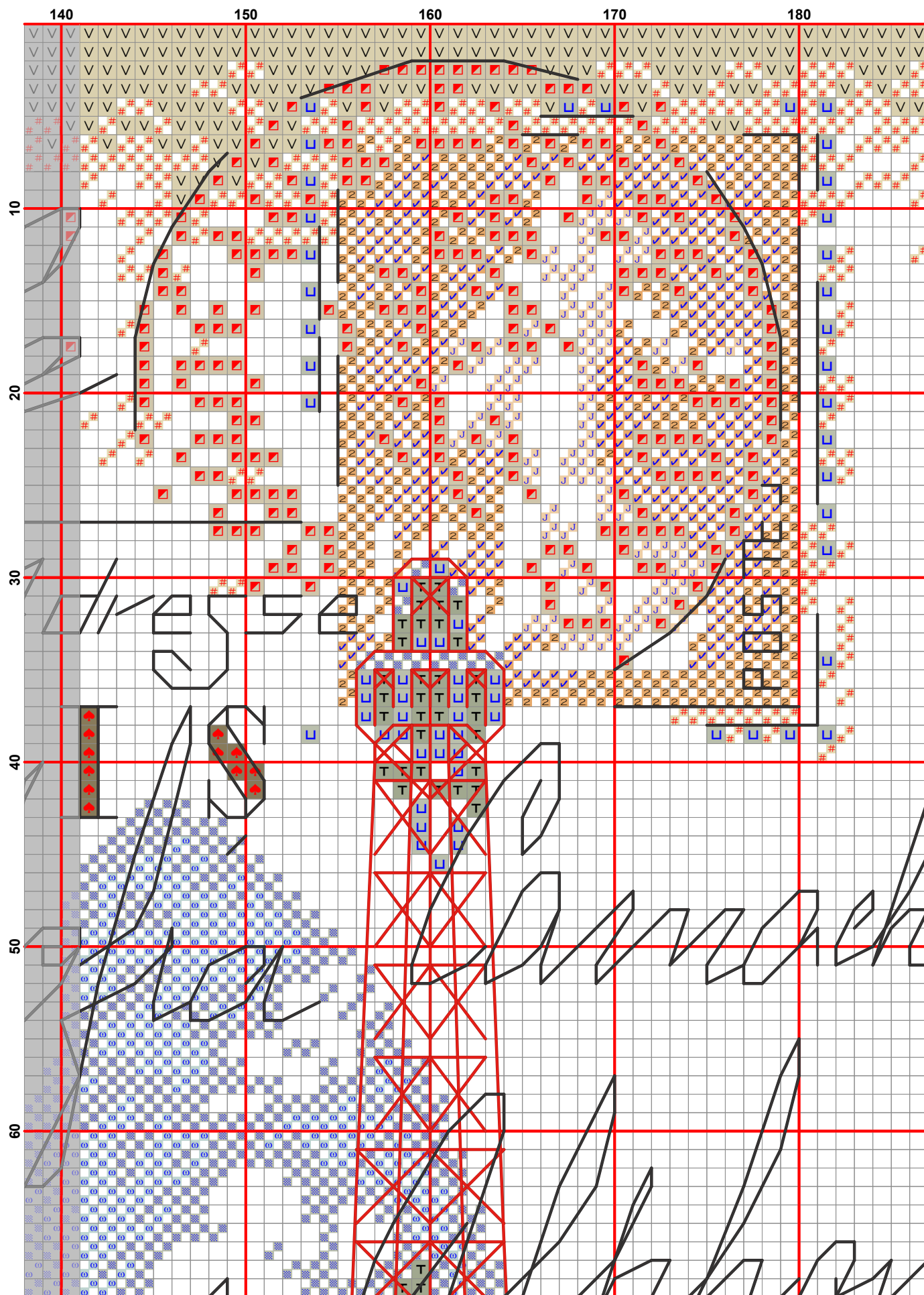
Carte

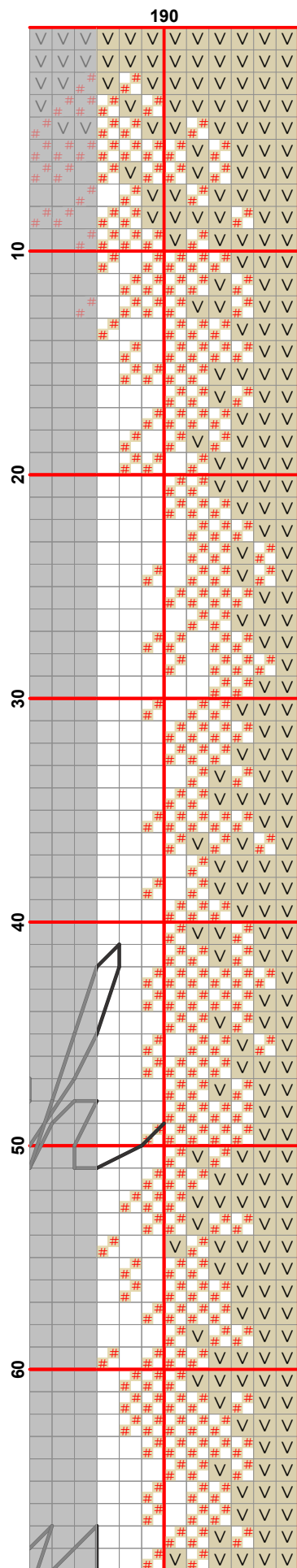
Carte

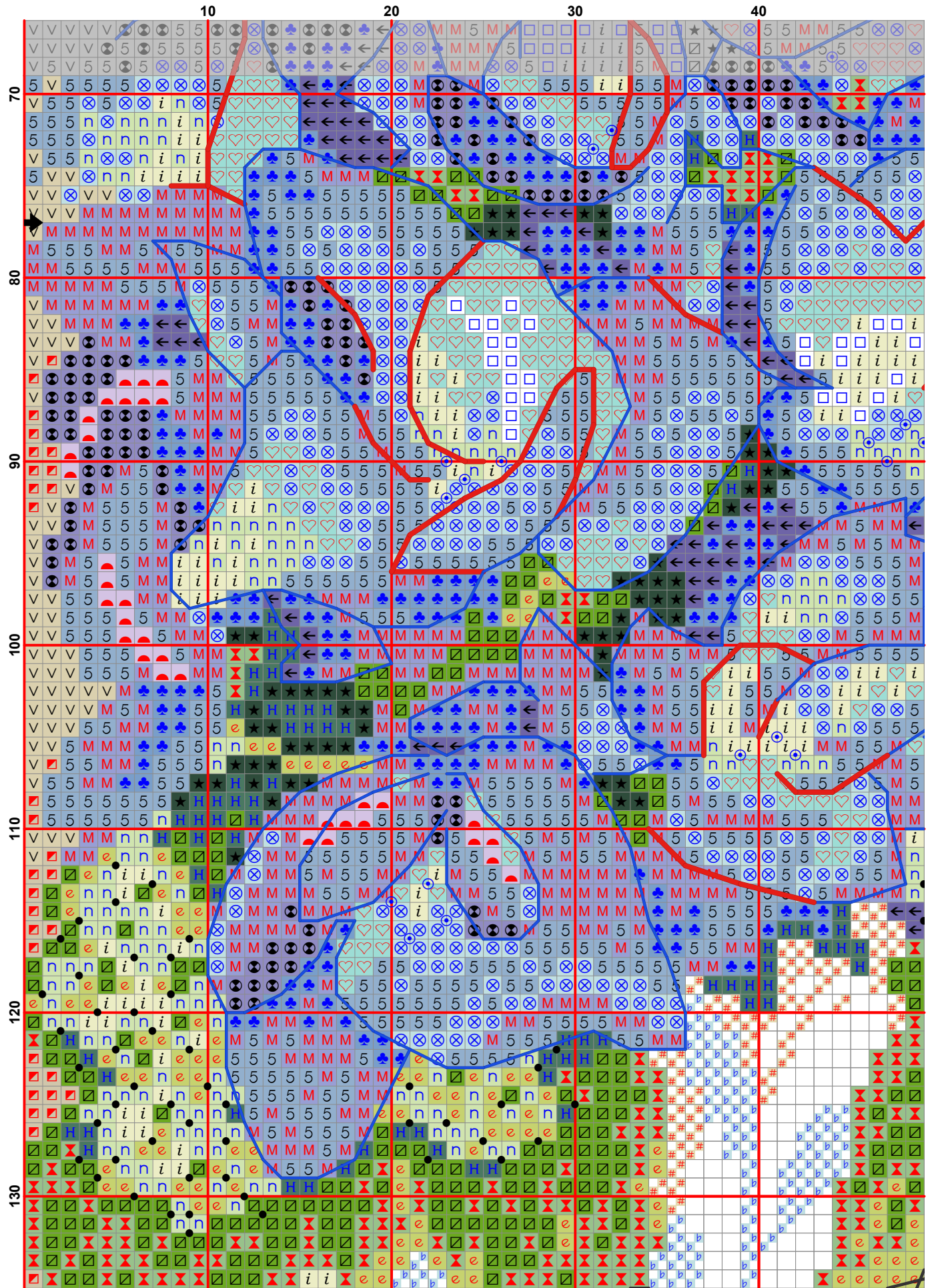


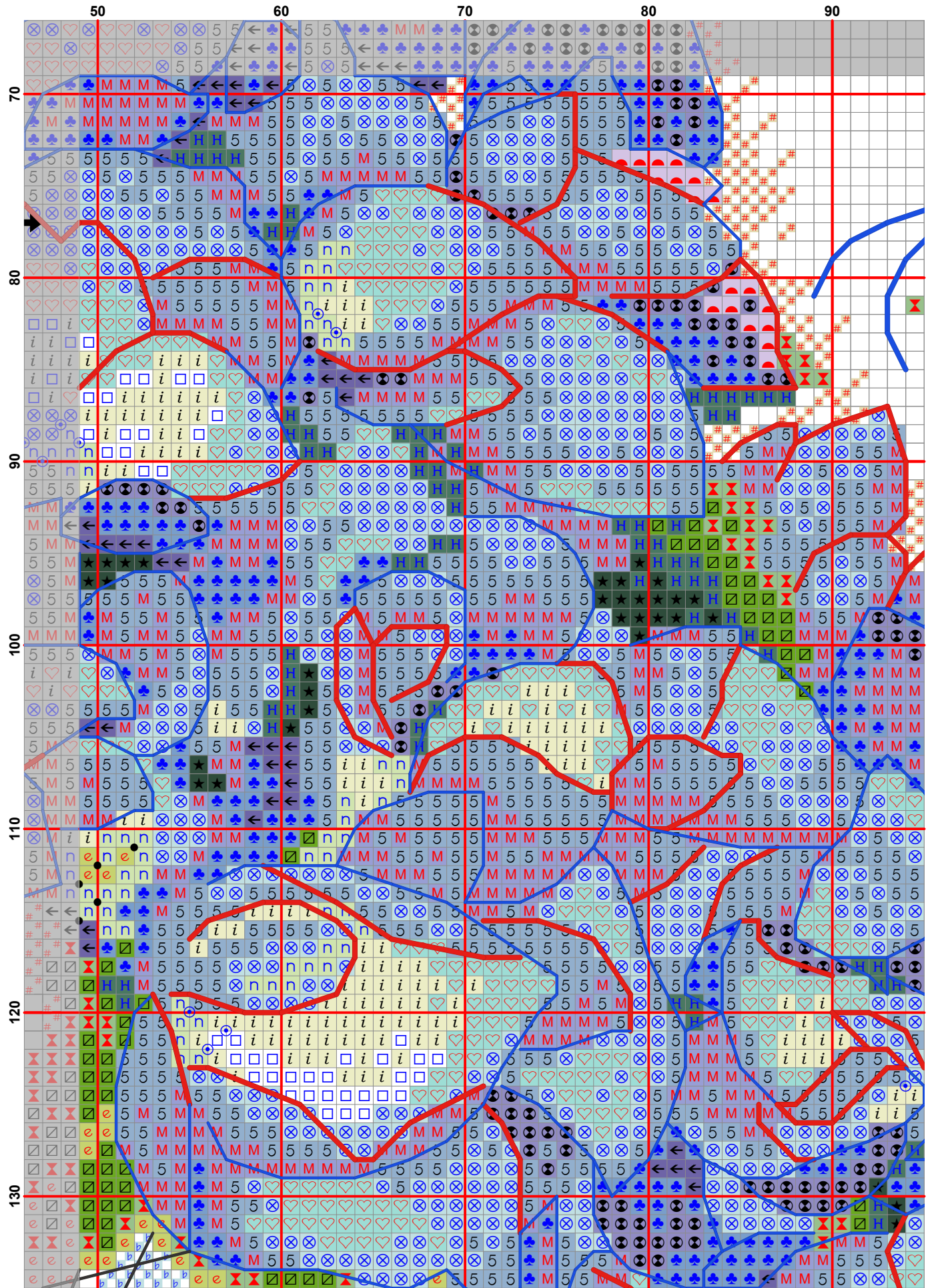


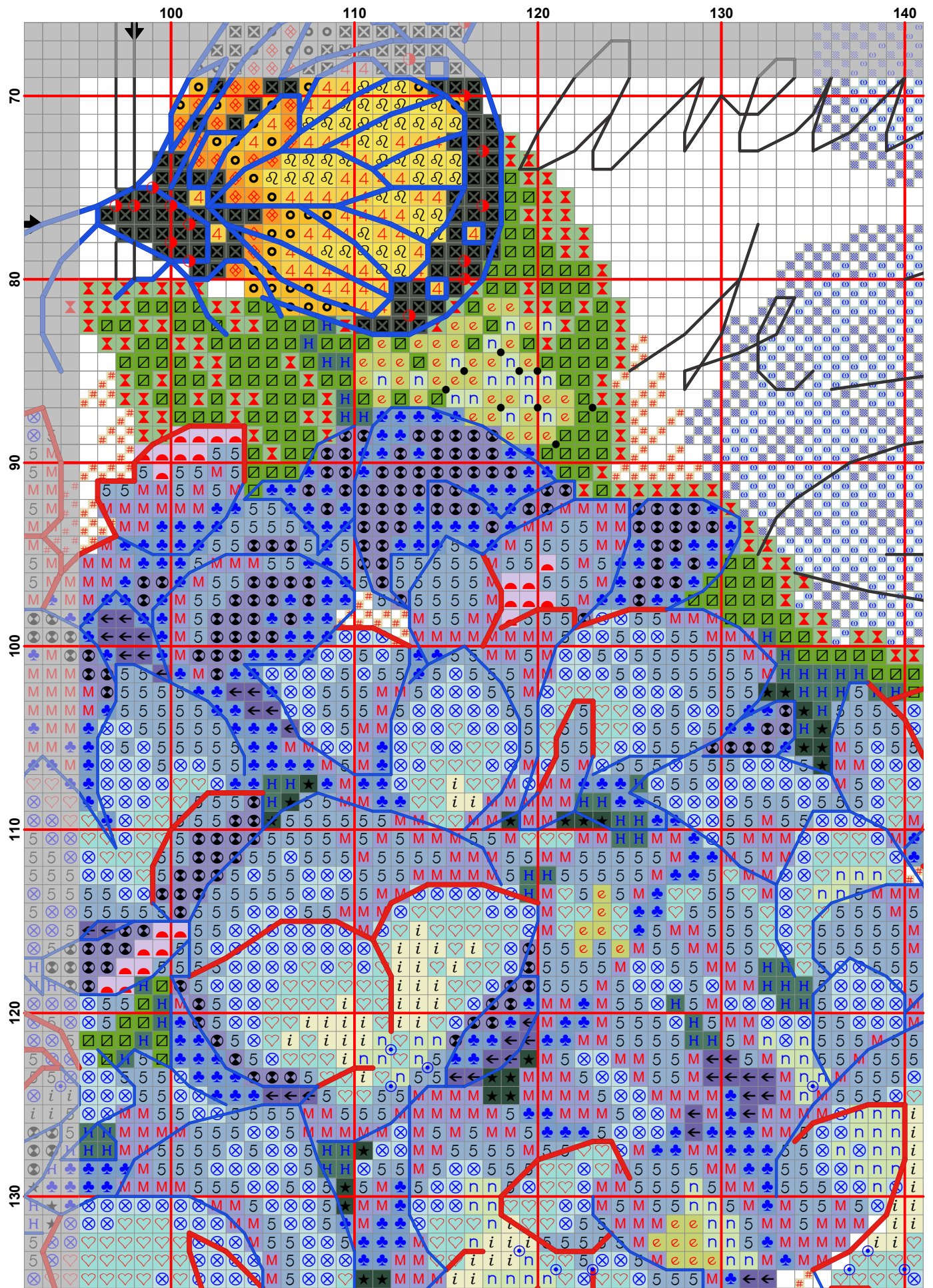


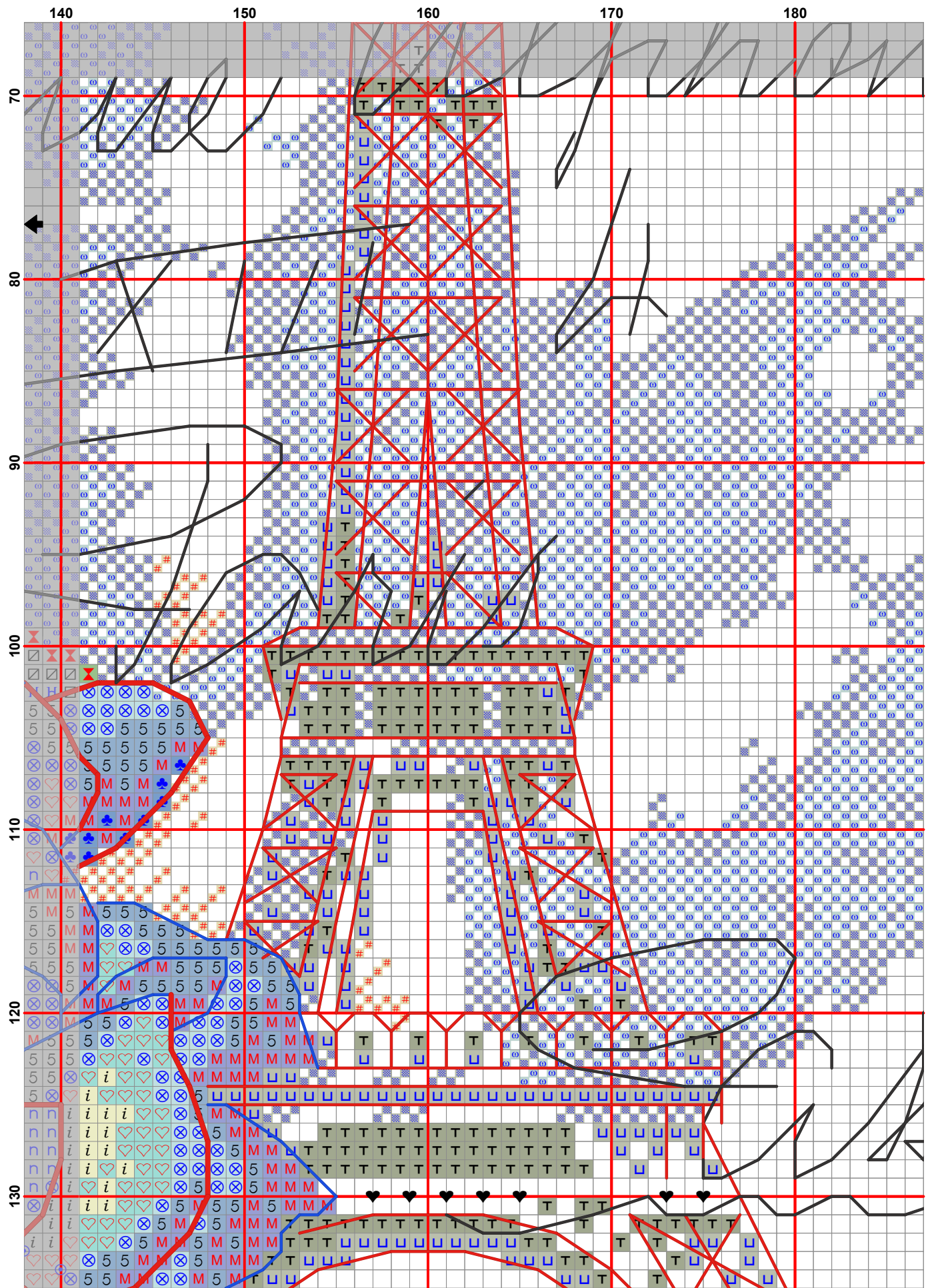


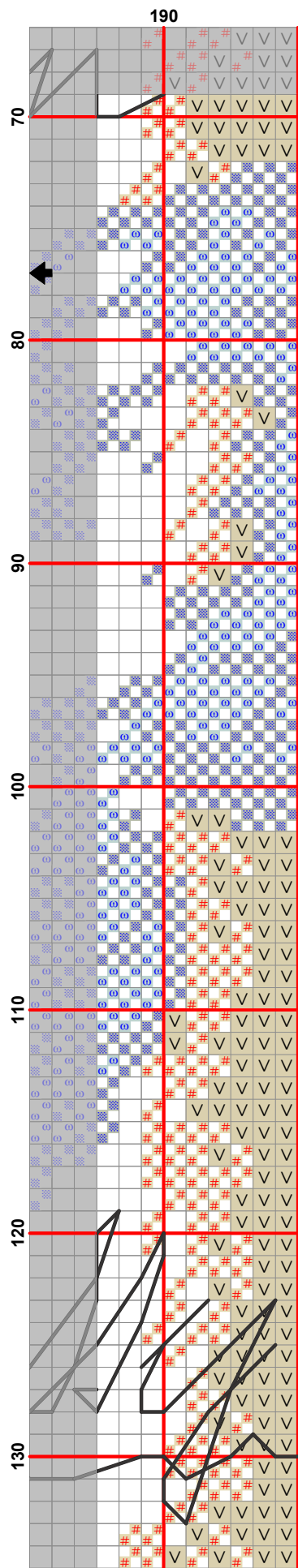


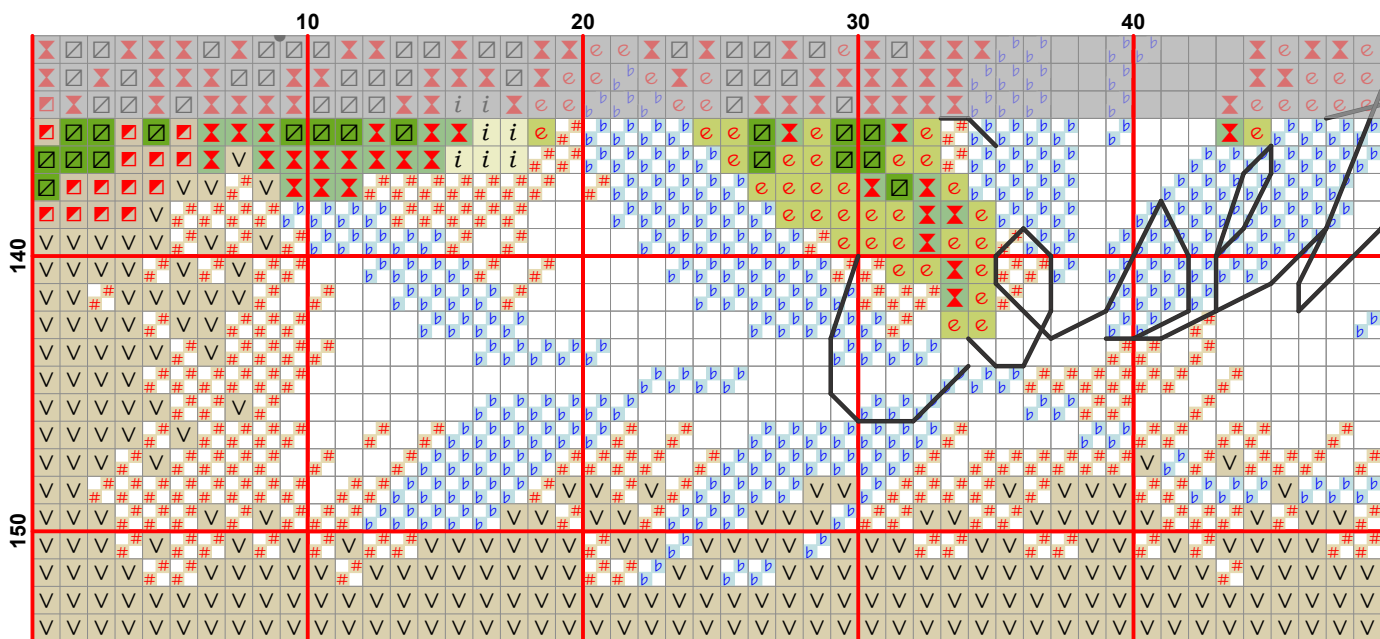


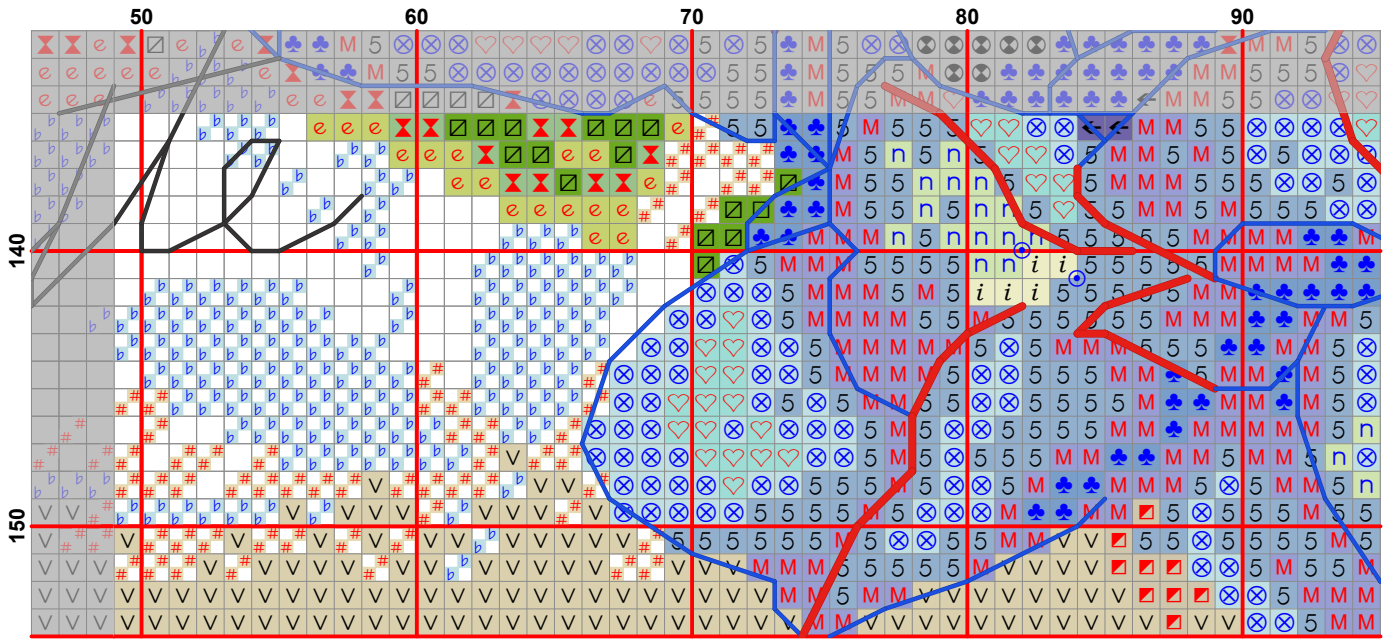


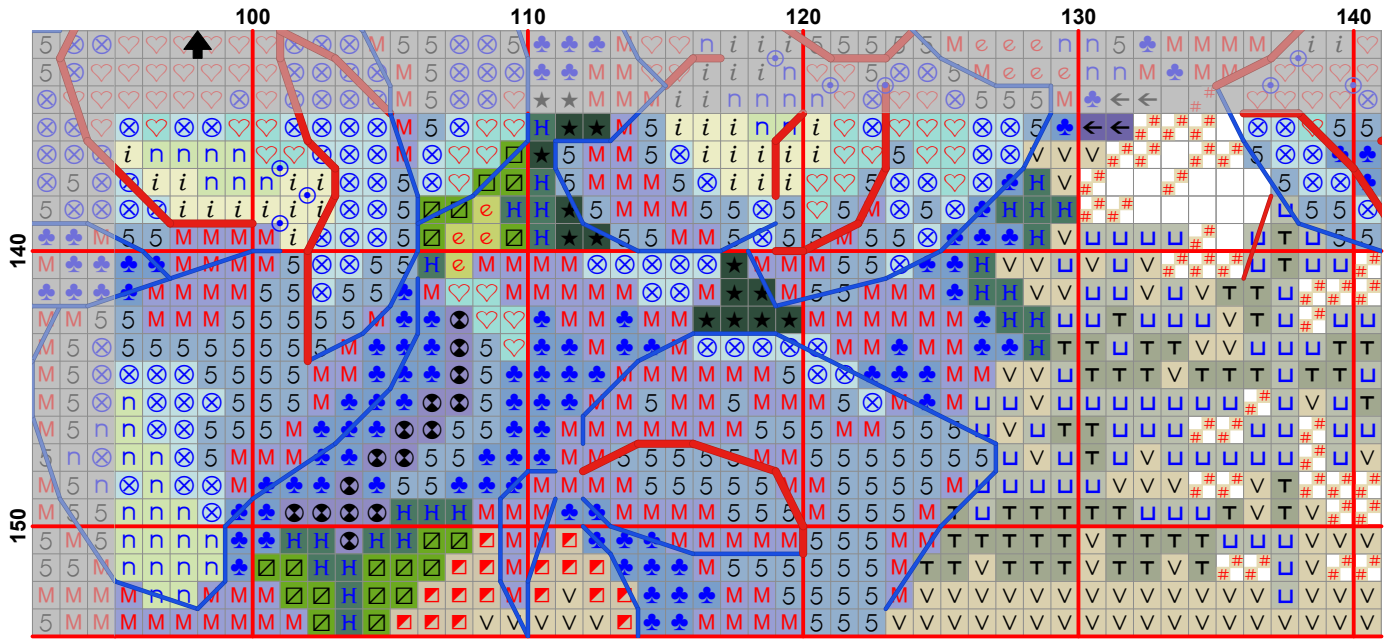


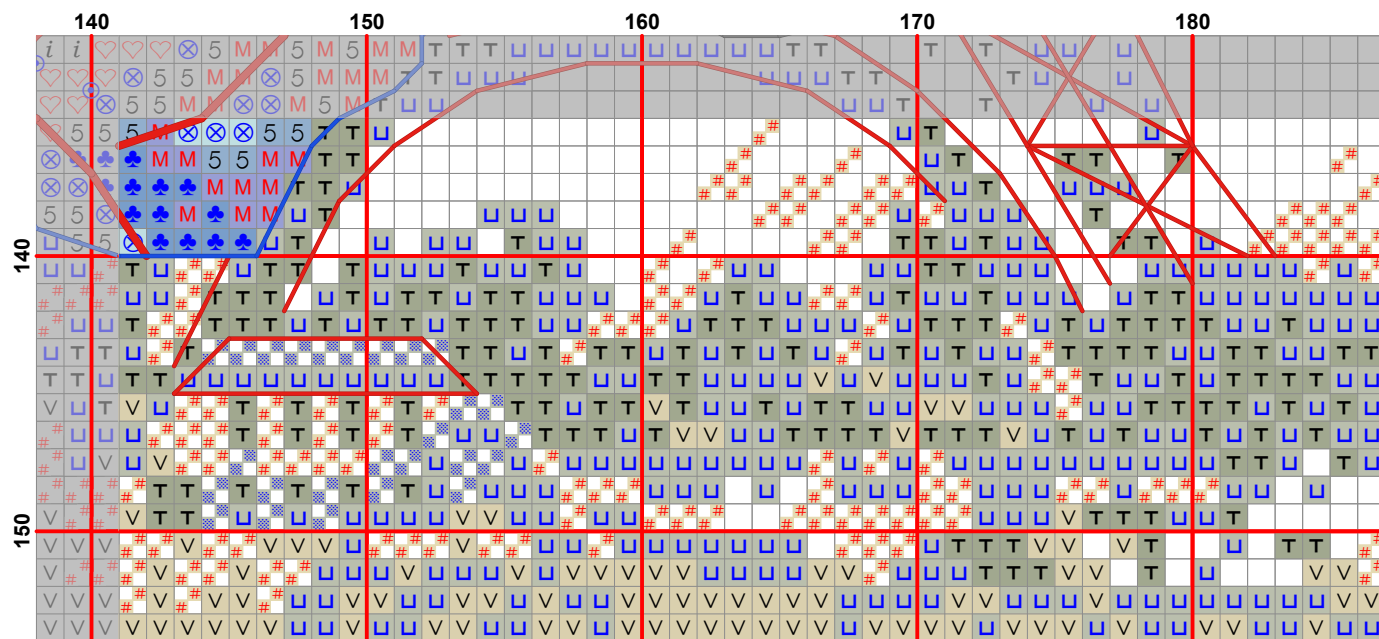


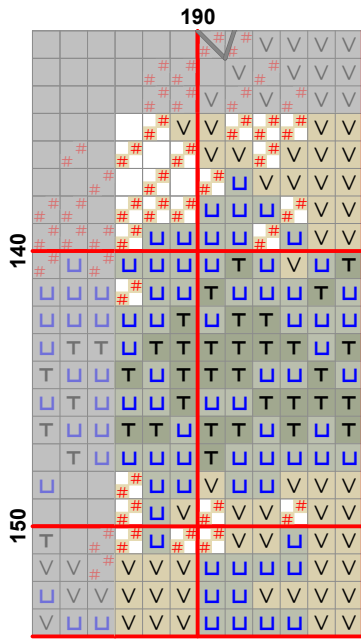












Pattern Name: # 70-35307 Paris Hydrangea
Designed By: Julie Paton
Company: Dimensions
Copyright: 2013
Fabric: Aida 14, БЕЛЫЙ
 196w X 154h Stitches
Size: 14 Count, 35.56w X 27.94h cm

Floss Used for Full Stitches:

Symbol	Strands	Type	Number	Color
	2	DMC	155	Blue Violet-MD DK. / 6250
	2	DMC	211	Lavender-LT. / 11263
	2	DMC	333	Blue Violet-VY DK. / 16265
	2	DMC	340	Blue Violet-MD. / 17110
	2	DMC	368	Pistachio Green-LT. / 6051
	2	DMC	500	Blue Green-VY DK. / 16880
	2	DMC	501	Blue Green-DK. / 6195
	2	DMC	647	Beaver Gray-MD. / 18900
	2	DMC	648	Beaver Gray-LT. / 18390
	2	DMC	725	Topaz. / 12298
	2	DMC	726	Topaz-LT. / 12295
	2	DMC	741	Tangerine-MD. / 12314
	2	DMC	742	Yellow-DK. / 12303
	2	DMC	772	Yellow Green-VY LT. / 16250
	2	DMC	794	Cornflower Blue-LT. / 6017
	2	DMC	799	Delft Blue-MD. / 6016
	2	DMC	828	Sky Blue-UL VY LT. / 17053
	2	DMC	842	Beige Brown-VY LT. / 15388
	2	DMC	906	Parrot Green-MD. / 16256
	2	DMC	964	Sea Green-LT. / 16181
	2	DMC	3790	Beige Gray-UL DK. / 15393
	2	DMC	3799	Pewter Gray-VY DK. / 18519
	2	DMC	3823	Yellow-UL Pale. / 12386
	2	DMC	White	White. / 11001
	1	DMC	368	Pistachio Green-LT
	1	DMC	726	Topaz-LT. / 6051 + 12295
	1	DMC	739	Tan-UL VY LT
	1	DMC	842	Beige Brown-VY LT. / 15372 + 15388

Floss Used for Half Stitches:





Symbol	Strands	Type	Number	Color
	1	DMC	402	Mahogany-VY LT. / 6402
	3	DMC	402	Mahogany-VY LT. / 6402
	2	DMC	648	Beaver Gray-LT. / 18390
	2	DMC	739	Tan-UL VY LT. / 15372
	2	DMC	828	Sky Blue-UL VY LT. / 17053
	1	DMC	945	Tawny. / 6945
	2	DMC	828	Sky Blue-UL VY LT
	1	DMC	648	Beaver Gray-LT. / 17053 (2) + 18390 (1)

Floss Used for French Knots:

Symbol	Strands	Type	Number	Color
	3	DMC	333	Blue Violet-VY DK. / 16265
	2	DMC	647	Beaver Gray-MD. / 18900
	4	DMC	3823	Yellow-UL Pale. / 12386
	2	DMC	White	White. / 11001

Floss Used for Back Stitches:

Symbol	Strands	Type	Number	Color
	1	DMC	333	Blue Violet-VY DK. / 16265

Symbol	Strands	Type	Number	Color
	1	DMC	647	Beaver Gray-MD. / 18900
	1	DMC	799	Delft Blue-MD. / 6016
	1	DMC	3790	Beige Gray-UL DK. / 15393
	2	DMC	3799	Pewter Gray-VY DK. / 18519

Notes:

Counted Cross Stitch

Fabric: 14 count ivory Aida

Finished size: 14" x 11" (35.5 x 28 cm)

Code#	Lenght (36"/91cm)	Code#	Lenght (36"/91cm)
11263	2	12314	1
16181	6	6250	4
16263	7	6195 (16878)	2
16256	4	17053	18
16880	2	16250	3
6017	16	17110	11
12303	1	18519	4
15393	6	15372	12
6945	1	18390	10
6402	2	11001	2
12386	5	12295	2
18900	7	15388	9
6016	9	6051 (6368)	3
		12298	1

Ткань: 14-я айда цвета слоновой кости

Размер готовой работы: 35,5 x 28 см

Все цвета переведены по таблице на сайте

<http://www.cyberstitchers.com/>

:) Oksa

