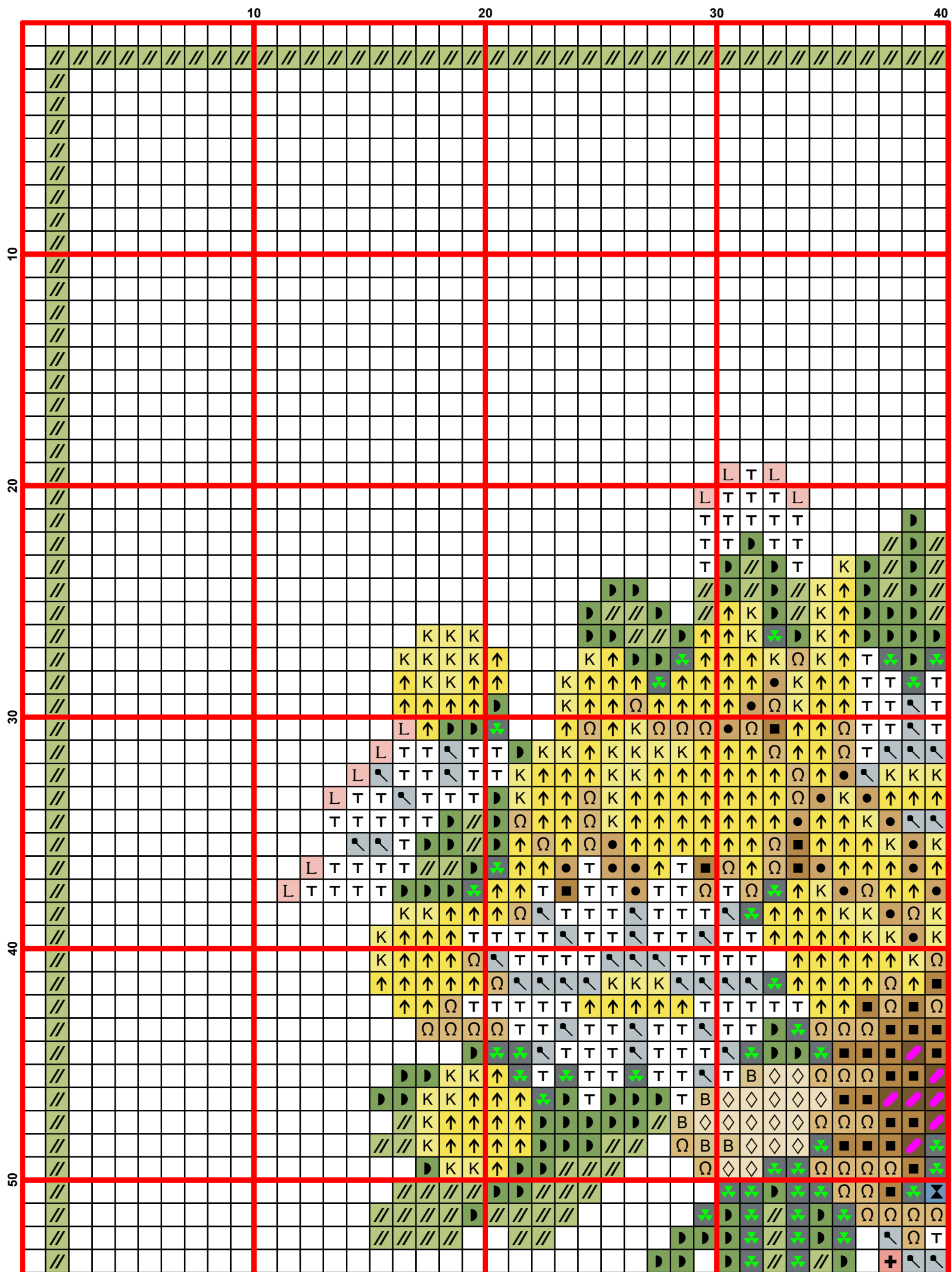
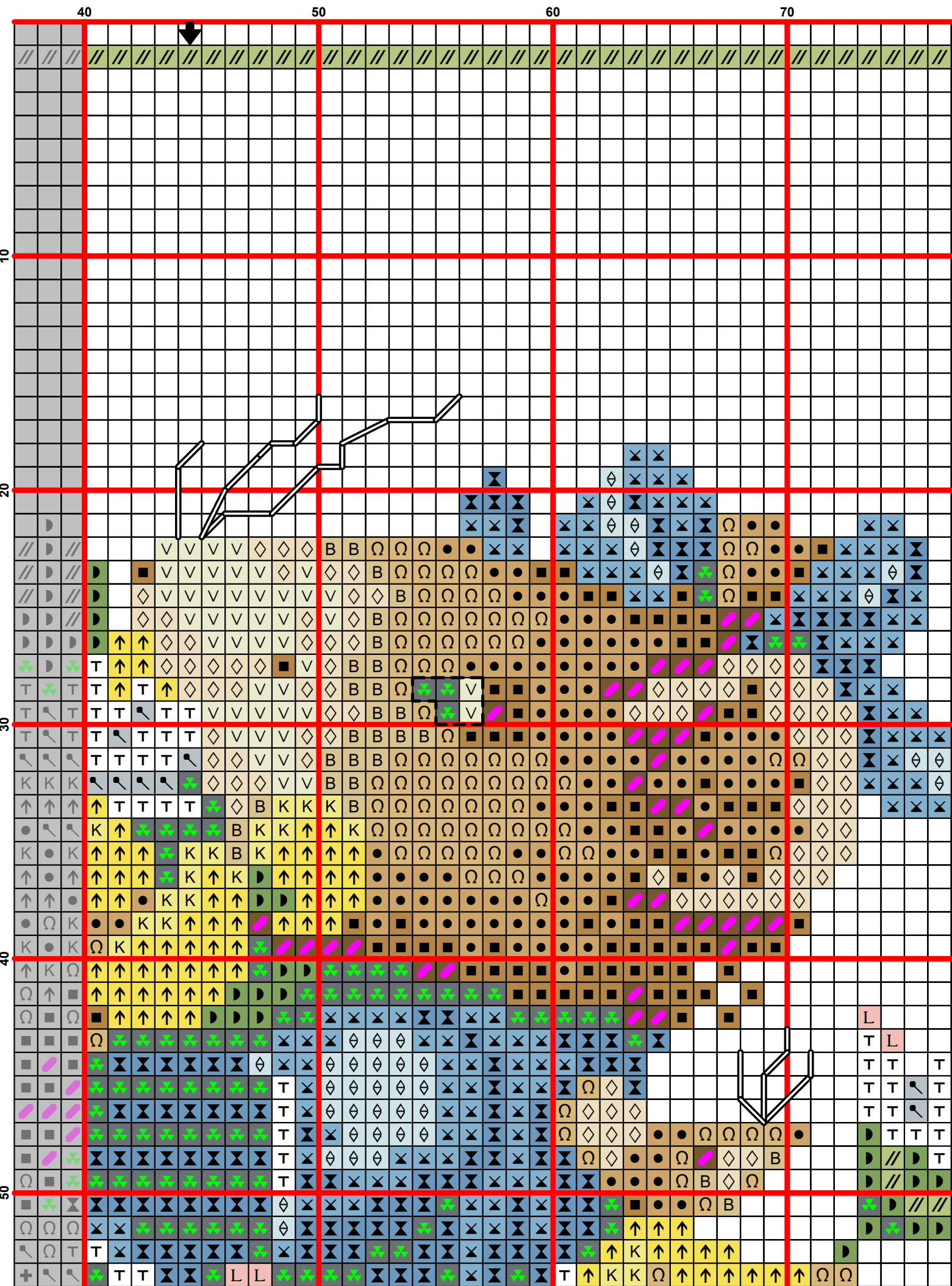


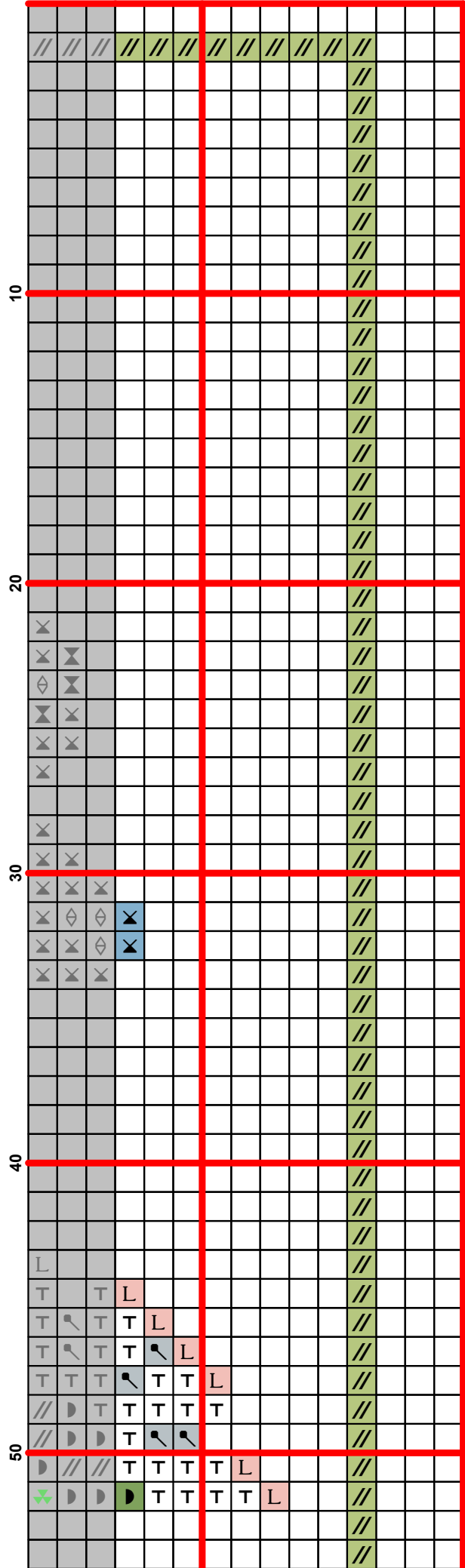


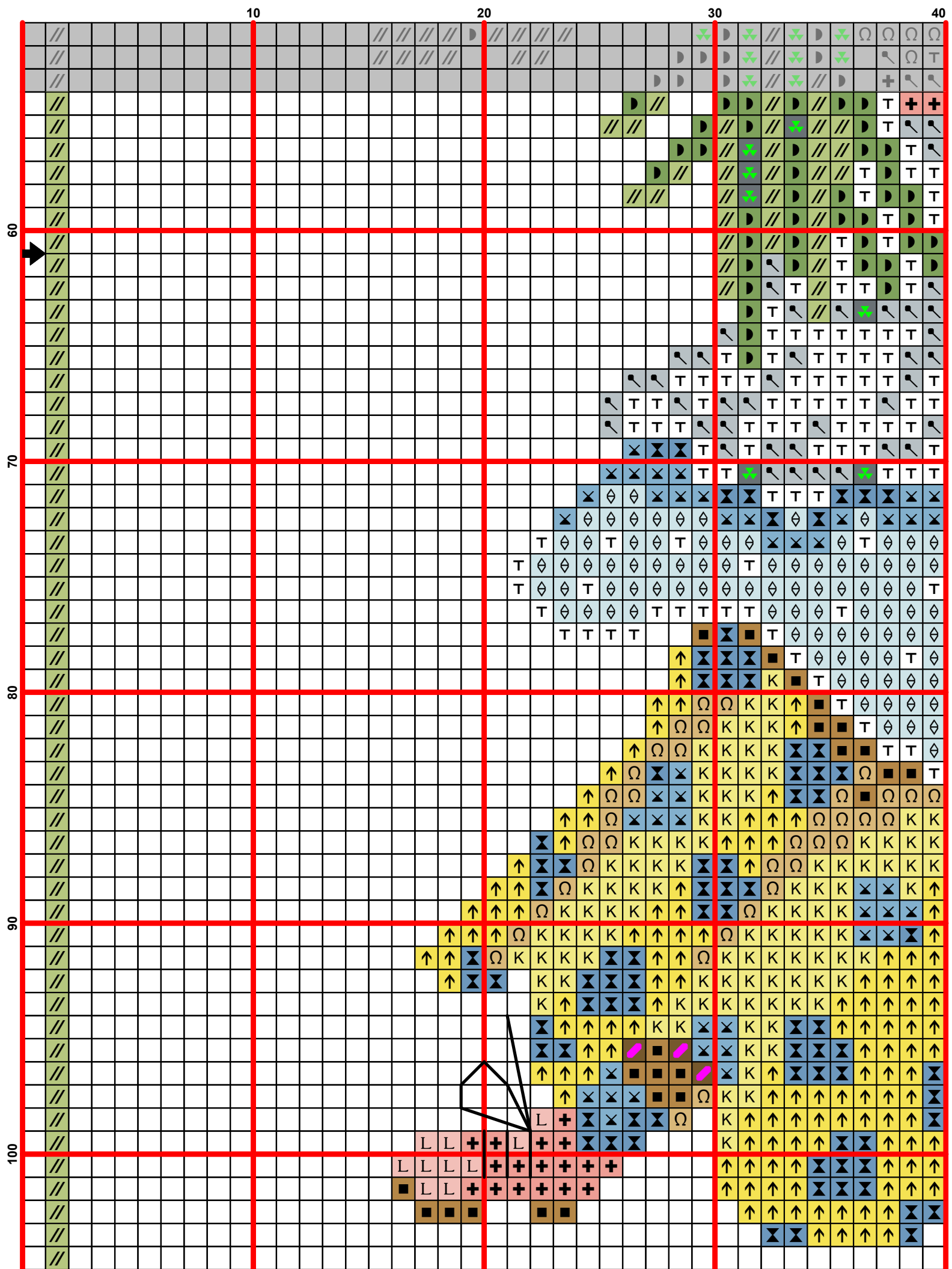
2024

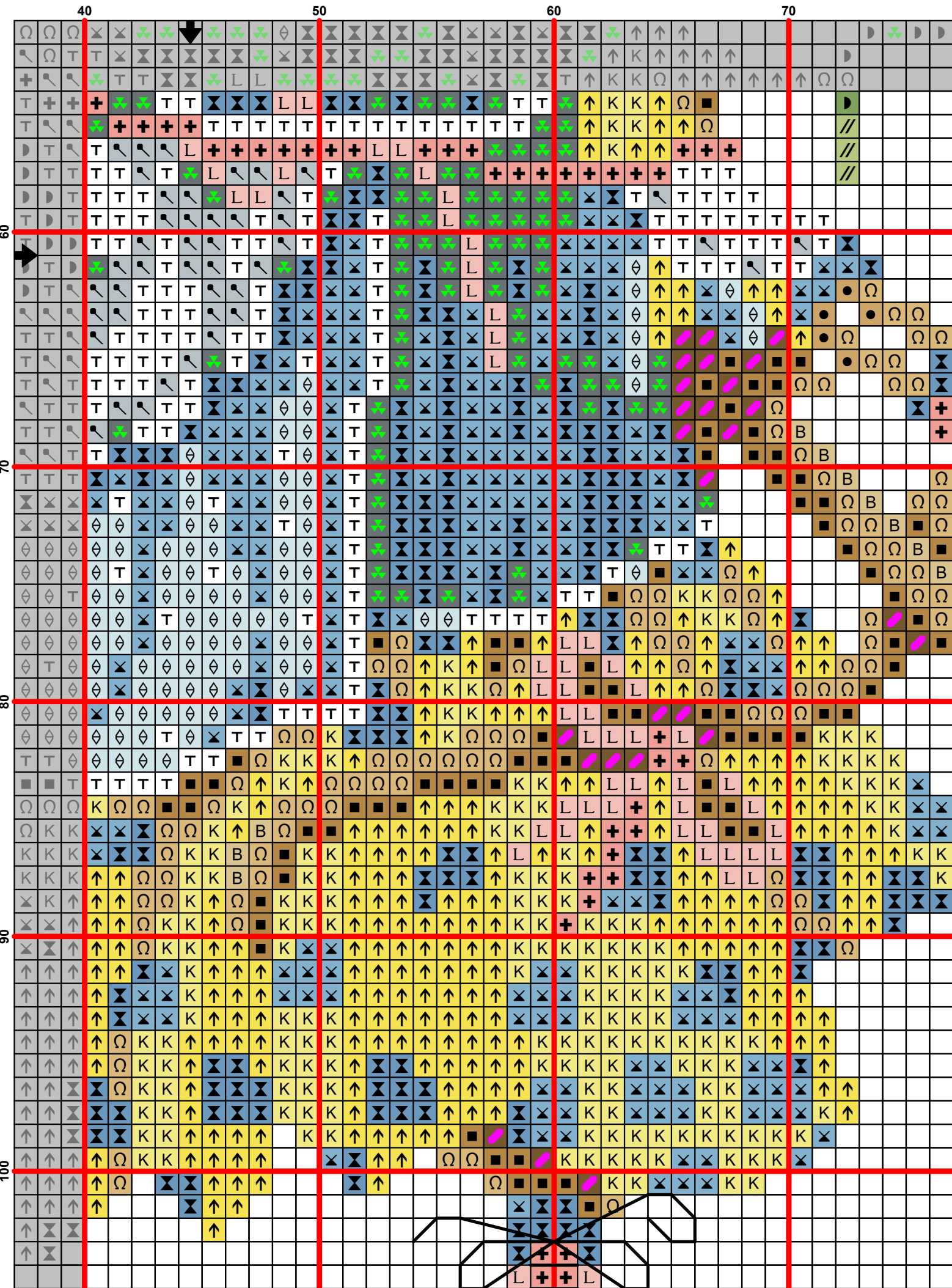




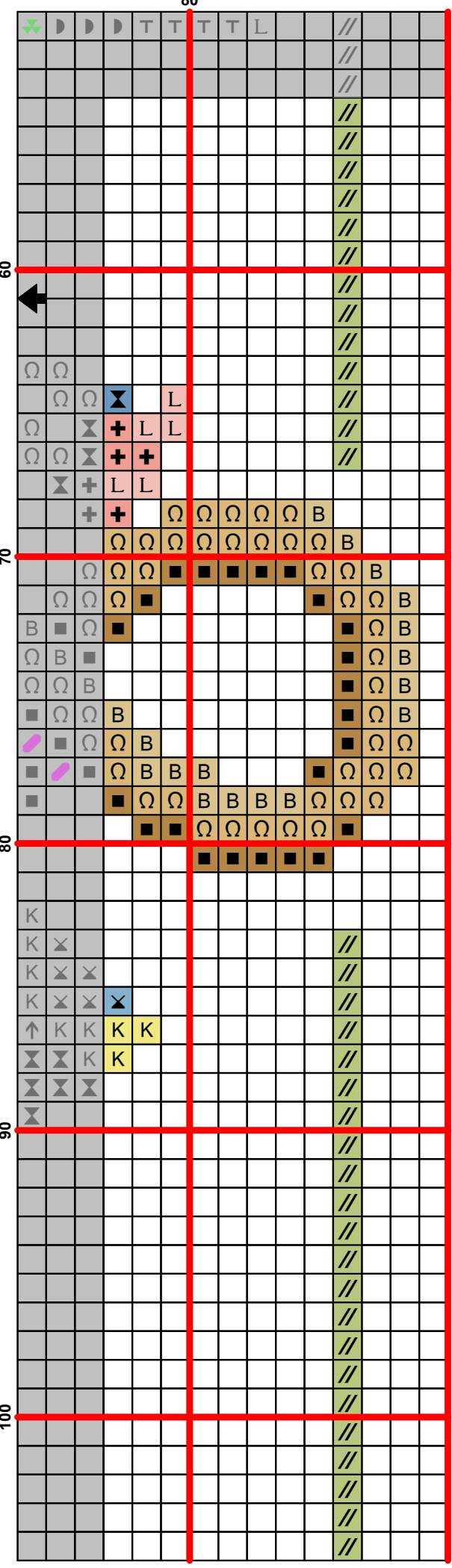
80

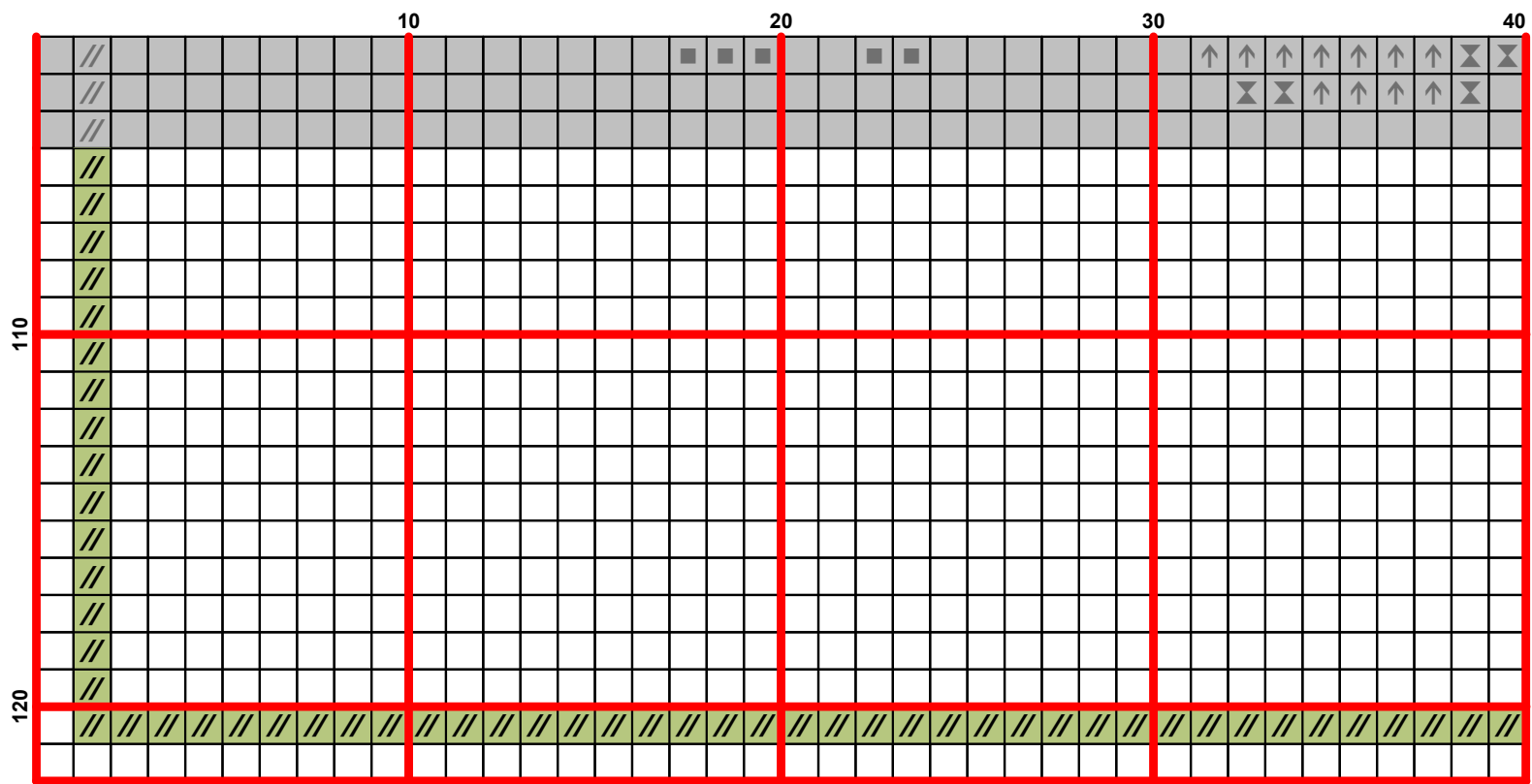


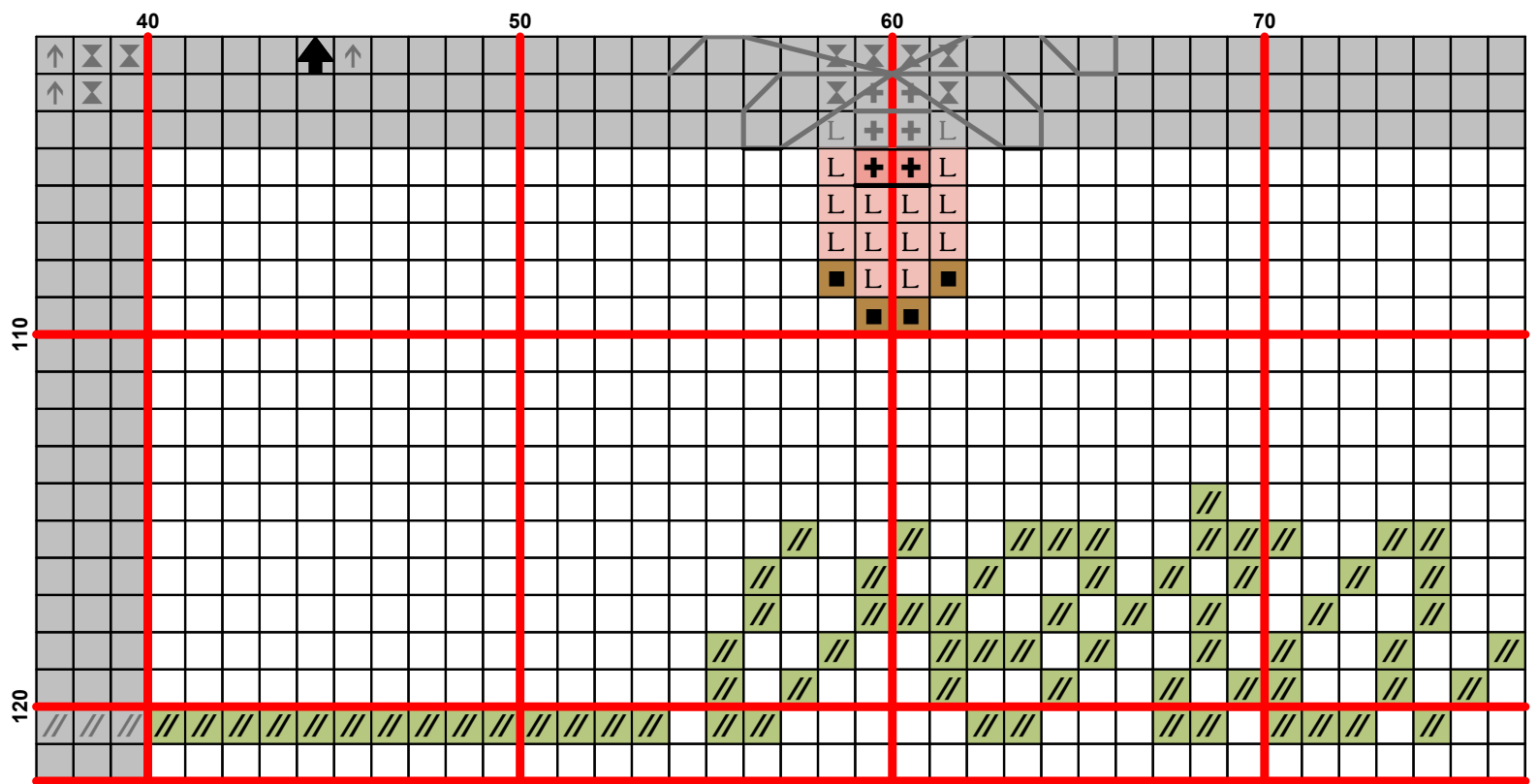


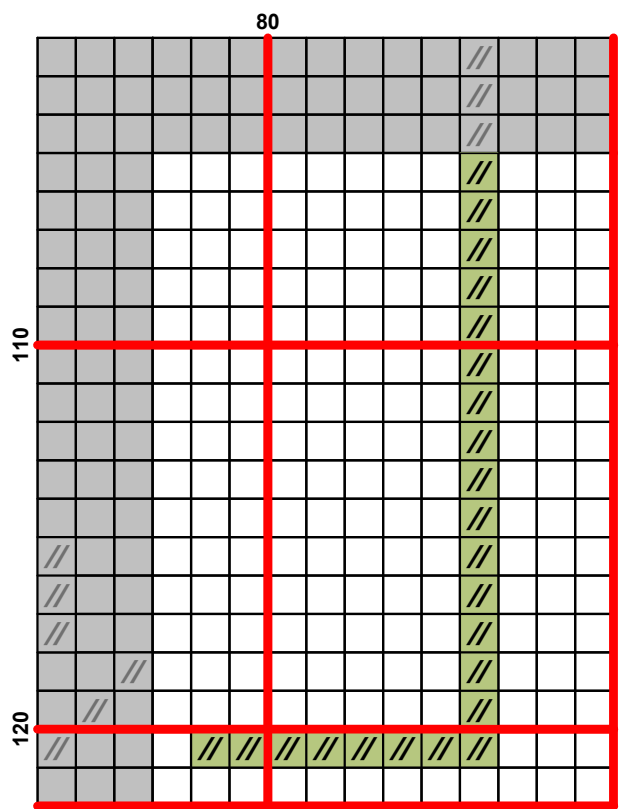


80









Pattern Name: Vera de muis met bloemen N°33840
Designed By: Lanarte
Fabric: Aida 10, White
 87w X 120h Stitches
Size(s) : 10 Count, 22.10w X 30.48h cm
 14 Count, 15.78w X 21.77h cm
 16 Count, 13.81w X 19.05h cm

Floss Used for Full Stitches:

Symbol	Strands	Type	Number	Color
	2	DMC	1	White
	2	DMC	317	Pewter Gray
	2	DMC	334	Baby Blue-MD
	2	DMC	415	Pearl Gray
	2	DMC	433	Brown-MD
	2	DMC	435	Brown-VY LT
	2	DMC	436	Tan
	2	DMC	437	Tan-LT
	2	DMC	726	Topaz-LT
	2	DMC	727	Topaz-VY LT
	2	DMC	738	Tan-VY LT
	2	DMC	746	Off White
	2	DMC	760	Salmon
	2	DMC	761	Salmon-LT
	2	DMC	775	Baby Blue-VY LT
	2	DMC	813	Blue-LT
	2	DMC	951	Tawny-LT
	2	DMC	3347	Yellow Green-MD
	2	DMC	3348	Yellow Green-LT

Floss Used for Back Stitches:

Symbol	Strands	Type	Number	Color
	1	DMC	317	Pewter Gray

Floss Used for Straight Stitches:

Symbol	Strands	Type	Number	Color
	1	DMC	317	Pewter Gray
	1	DMC	415	Pearl Gray

Расход нитей

Нитей в мотке: 6

Длина мотка: 795.0 cm

Type	Number	Full	Half	Quarter	Petite	Back (cm)	Str (cm)	Spec (cm)	French	Bead	Skein Est.
DMC	1	431	0	0	0	0.0	0.0	0.0	0	0	N/A
DMC	317	227	0	0	0	1.0	6.3	0.0	0	0	N/A
DMC	334	394	0	0	0	0.0	0.0	0.0	0	0	N/A
DMC	415	139	0	0	0	0.0	3.8	0.0	0	0	N/A
DMC	433	73	0	0	0	0.0	0.0	0.0	0	0	N/A
DMC	435	244	0	0	0	0.0	0.0	0.0	0	0	N/A
DMC	436	147	0	0	0	0.0	0.0	0.0	0	0	N/A
DMC	437	349	0	0	0	0.0	0.0	0.0	0	0	N/A
DMC	726	623	0	0	0	0.0	0.0	0.0	0	0	N/A
DMC	727	370	0	0	0	0.0	0.0	0.0	0	0	N/A
DMC	738	60	0	0	0	0.0	0.0	0.0	0	0	N/A
DMC	746	45	0	0	0	0.0	0.0	0.0	0	0	N/A
DMC	760	69	0	0	0	0.0	0.0	0.0	0	0	N/A
DMC	761	102	0	0	0	0.0	0.0	0.0	0	0	N/A
DMC	775	222	0	0	0	0.0	0.0	0.0	0	0	N/A
DMC	813	391	0	0	0	0.0	0.0	0.0	0	0	N/A
DMC	951	113	0	0	0	0.0	0.0	0.0	0	0	N/A
DMC	3347	150	0	0	0	0.0	0.0	0.0	0	0	N/A
DMC	3348	519	0	0	0	0.0	0.0	0.0	0	0	N/A